

ALILY

ENERGY

One-Stop Service to Solar-PV Project from Germany

www.alilyenergy.com | lily@alilyenergy.com

CONTENTS

Who we are?

Why ALILY?

Products and Projects

CSR

Who we are?

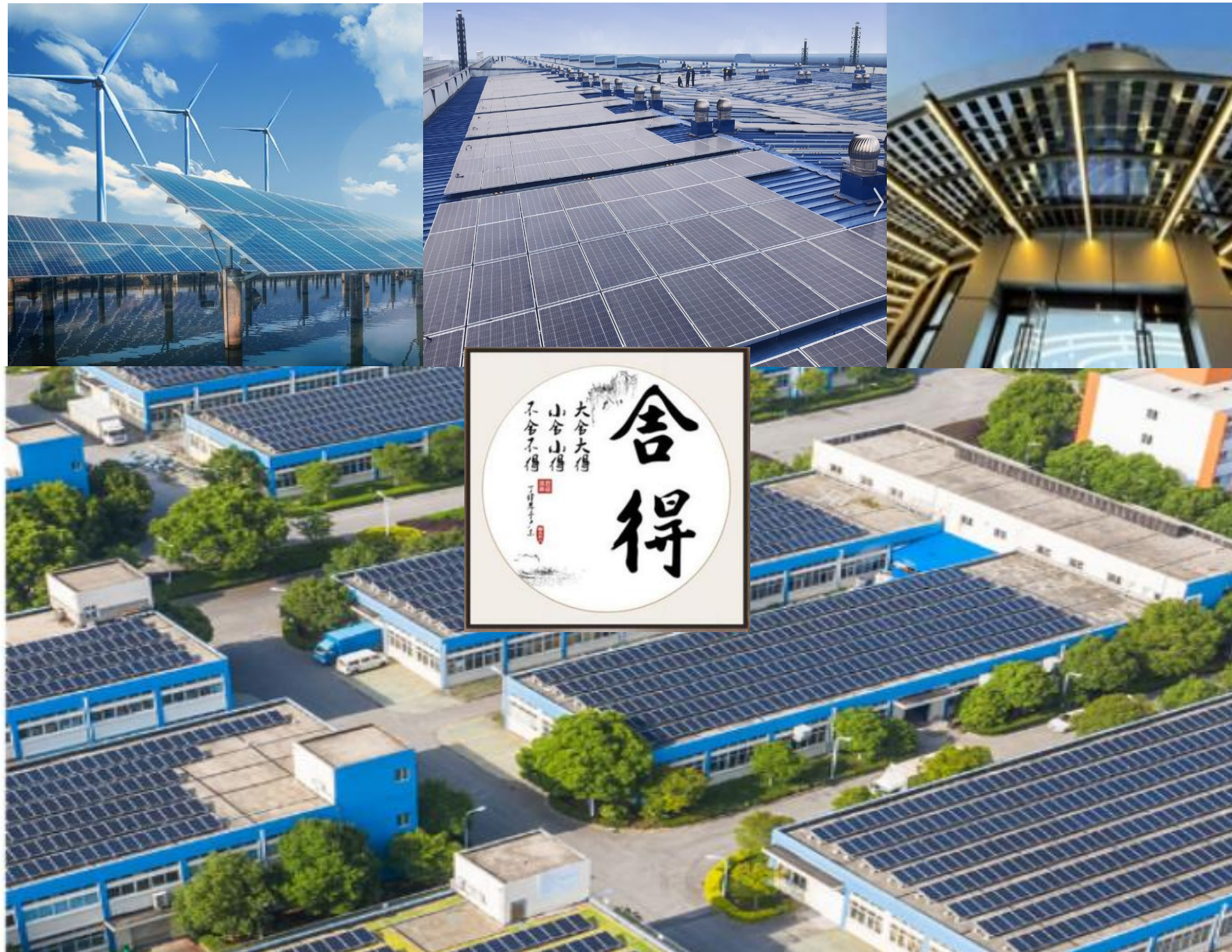


Introduction



ALILY ENERGY was registered in Germany. ALILY team has **20** years solar panel R&D and manufacturing experiences, committed to making unremitting efforts to mitigate global warming, and providing quality power station solutions for global clients. For global clients, ALILY provides one-stop turnkey integrated solutions (development, financing, design, construction, operation and maintenance, customized solar panel, BIPV, portable solar panel, battery and etc...), and simultaneously offers state-of-the-art module with pre-sale, sale, after-sales quality services.

Who we are?



ALILY ENERGY

Vision

ALILY Energy Empower You!

Mission

TOP 1 One-stop solar-pv solution provider !

Value

Give-and-take

www.alilyenergy.com

Who we are?



Focus on global photovoltaic applications

Businesses

Solar Panel

BIPV Solar Construction Materials

Solar-PV + storage system

www.alilyenergy.com

Who we are?

Milestone



- Founded ALILY in China and Germany
- Sales volume: 1 million dollars

- Sales volume: over 500 million USD dollars
- Constantly updated...

2020

2021

2022

2023

- Open Indian Australia Brazilian offices
- Embrace innovation with clients

- Module plan: 2GW+
- Growing rapidly

Who we are?



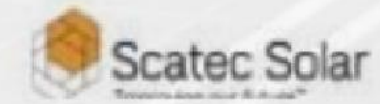
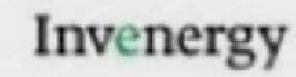
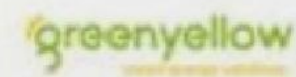
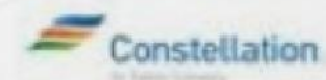
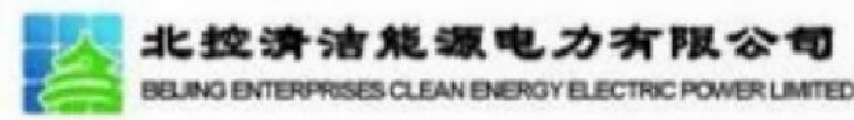
Global Sales Network



Who we are?



Global clients



Why ALILY ?



German Design

Germany Design
Product engineers from Freiburg Germany
15 Years solar panel manufacturing experiences
Without solar wastes

Freiburg im Breisgau

Green city
Solar origin city
Environmental city



Why ALILY?



Factory Price

Premium Quality & Warranty

Tier 1 Solar panel manufactures
The third party factory audit report

Global certificates

CNAS certified Lab

100% Pure A solar cell materials only commitment
30 years limited power warranty for the glass panel



Why ALILY?



Products Warranty

Guarantee

- 100% Pure A solar cell materials only commitment.
- All products are subject to strict quality control and 100% full capacity.

- 25-30 years linear power warranty for the glass panel.
- with the third party quality insurance from Munich RE AND ChinaRe.

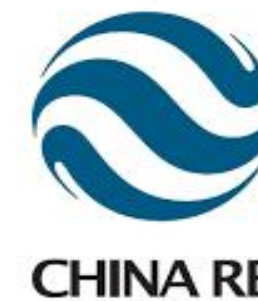
Test

- Strict internal quality test.
- More than 200 test items, including various special environments and applications around the world.

15
years

20-30
years

200 +
items



DEKRA witnessed
laboratory



Why ALILY?



Customized Service

Customized designs : **OEM Service**

Building Integrated with solar PV panel.

Flexible Solar Panel

Standard modules of client brands



Solar panel

AL **41**

AL41-395~410MX-E3



AL **41**

AL6-535~555MBG-E3



AL **6**

AL6-535~555MBG-E3



Solar panel

AL **6**

AL6-535~555 M -E3



AL **6**

AL6-560~580NBG-E3



AL **9**

AL9-650~670MBG-E1



BIPV Solar Construction Material

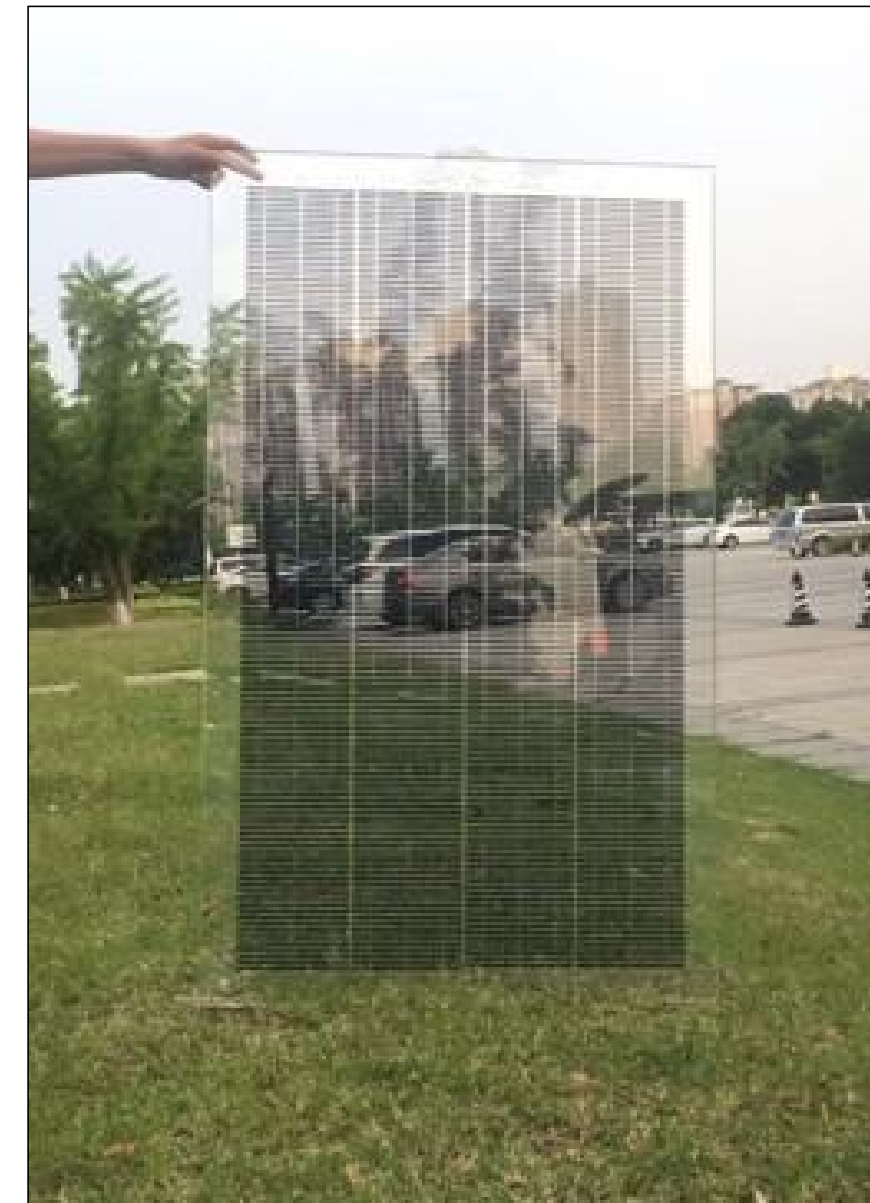
Residential and commercial solar projects

| | |
|-----------------------|--|
| Commission Time | Jan. 17 th , 2021 |
| Location | Nantong Jiangsu China |
| Capacity | 890KW |
| BIPV solar panel | Bifacial HJT high efficiency BIPV solar panels 80w-120W/pcs |
| Power generation/year | 1,104,490Kwh (approximately) |
| EPC | ALILY ENERGY CO., LTD. |



BIPV Solar Construction Material

Solar glass curtain wall, solar fence, solar glass roof, solar tile, solar canopy, solar Advertising light box and etc...



5kW Single Phase Hybrid Inverter system

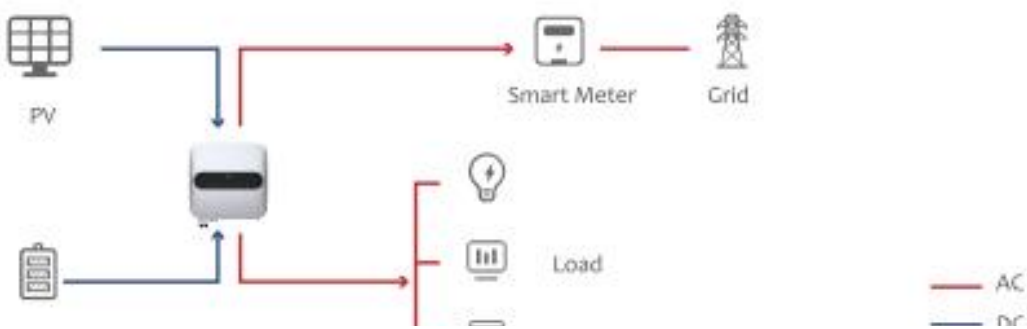


SMT-5K-TL-LV

Support solar panel, battery, grid and load four-port interface
Can be integrated with on-grid and off-grid switching function
Easy capacity expansion and installation
Full power output in the off-grid state
Strong output capability and good load adaptability



Residential Energy Storage system



| Model Type | SMT-HESS-LV3584B | | | |
|---------------------------------------|------------------|-------------|-------------|-------------|
| No. of Battery in Parallel | 1 | 2 | 3 | 4 |
| Rated Capacity (kWh) | 3.58 | 7.16 | 10.7 | 14.3 |
| Size (W*D*H) mm | 570*352*381 | 570*352*537 | 570*352*693 | 570*352*849 |
| Rated Voltage | 51.2 | 51.2 | 51.2 | 51.2 |
| Depth of Discharge (DoD) | 90% | 90% | 90% | 90% |
| Working Temperature (Degrees Celsius) | 0~50 | 0~50 | 0~50 | 0~50 |
| Communication Port | RS485;CAN | RS485;CAN | RS485;CAN | RS485;CAN |
| Life Cycle | >10Years | >10Years | >10Years | >10Years |

| Model Type | SMT-HESS-LV3584B | | | |
|---------------------------------------|------------------|--------------|--------------|--------------|
| No. of Battery in Parallel | 5 | 6 | 7 | 8 |
| Rated Capacity (kWh) | 17.92 | 21.5 | 25.08 | 28.67 |
| Size (W*D*H) mm | 570*352*1005 | 570*352*1161 | 570*352*1317 | 570*352*1473 |
| Rated Voltage | 51.2 | 51.2 | 51.2 | 51.2 |
| Depth of Discharge (DoD) | 90% | 90% | 90% | 90% |
| Working Temperature (Degrees Celsius) | 0~50 | 0~50 | 0~50 | 0~50 |
| Communication Port | RS485;CAN | RS485;CAN | RS485;CAN | RS485;CAN |
| Life Cycle | >10Years | >10Years | >10Years | >10Years |

10kw Three Phases Hybrid Inverter system

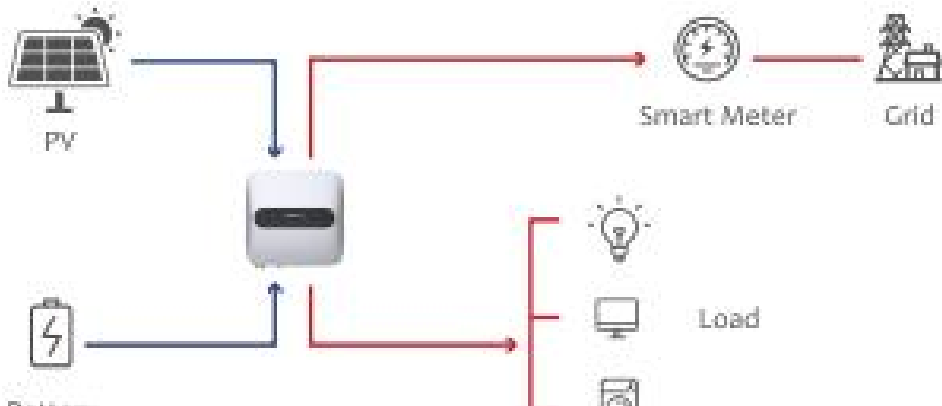


SMT-10K-TL-TH

Support solar panel, battery, grid and load four-port interface
Can be integrated with on-grid and off-grid switching function
Easy capacity expansion and installation
Full power output in the off-grid state
Strong output capability and good load adaptability



Residential Energy Storage system



| Model Type | SMT-HESS-HV5324B | | | | |
|---------------------------------------|------------------|--------------|--------------|--------------|--------------|
| No. of Battery in Series | 4 | 5 | 6 | 7 | 8 |
| Rated Voltage (V) | 204.8 | 256 | 307.2 | 358.4 | 409.6 |
| Rated Capacity (kWh) | 20.48 | 25.6 | 30.72 | 35.84 | 40.96 |
| Size (W*D*H) mm | 590*363*923 | 590*363*1093 | 590*363*1263 | 590*363*1433 | 590*363*1603 |
| Battery Module | | | | | |
| Rated Voltage (V) | 51.2 | 51.2 | 51.2 | 51.2 | 51.2 |
| Rated Capacity (Ah) | 100 | 100 | 100 | 100 | 100 |
| Depth of Discharge (DoD) | 90% | 90% | 90% | 90% | 90% |
| Communication Port | RS485;CAN | RS485;CAN | RS485;CAN | RS485;CAN | RS485;CAN |
| Number of Cycles (Times) | 6000@25°C | 6000@25°C | 6000@25°C | 6000@25°C | 6000@25°C |
| Working Temperature (Degrees Celsius) | 0~50 | 0~50 | 0~50 | 0~50 | 0~50 |
| Life Cycle | >10Years | >10Years | >10Years | >10Years | >10Years |

solar roof top project



Project scale: 5.2MW



Location: Henan Province



The delivery time:
Jun.2020



solar roof top project



Project scale: 3.8MW



Location: Shandong province



The delivery time:
Jun,2021



solar roof BIPV project



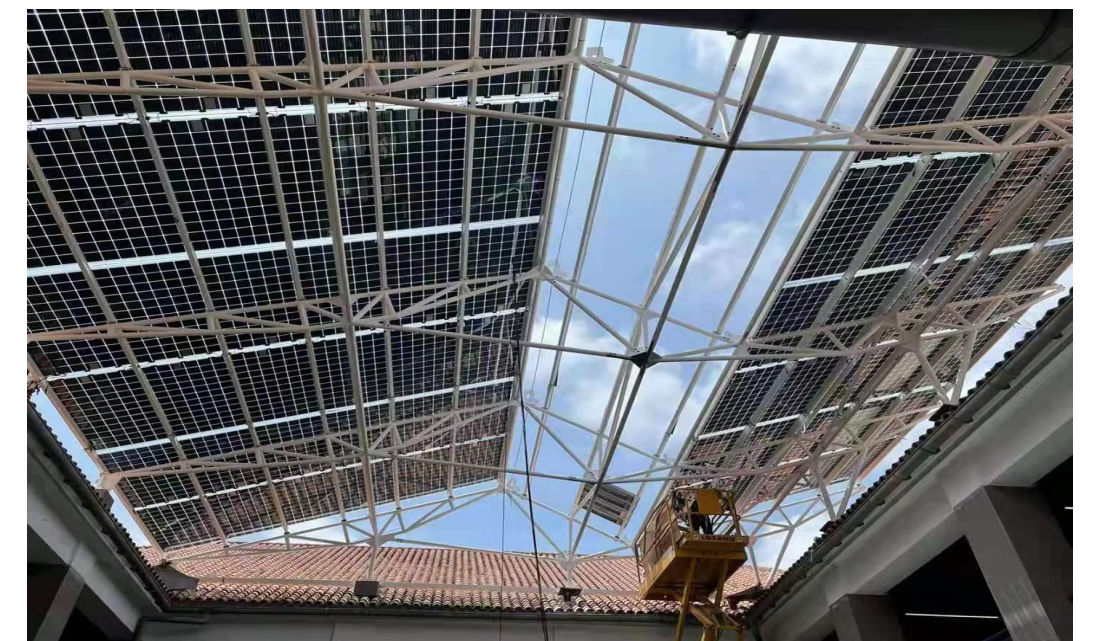
Project scale: 580KW



Location: Spain



The delivery time:
Mar,2021



The Large ground power station project from the ACME in India



Project scale: 80MW



Location: Bikaner, India



The delivery time:
2022.2~2022.3



AVADA Power Station Project in India



Project scale: 150MW



Location: Maharashtra, India



The delivery time:
2022.2~2022.3



BEL ENERGY PV project in Brazil



Project scale: 120MW



Location: Viniedu, Brazil



The delivery time:
2022.7~2022.8



ALILY posted 3 boxes of 30W portable solar charger to Xinxiang Henan China on 24th July 2021. Xinjiang Henan province got terribly flooded once in a thousand years and power failed for many days. The solar chargers recharged local people's cellphones when emergency happened.

Purity

Generosity

Prosperity



Solar panel can save our lives once disasters



